

Courtesy Of John Rota Of Sweetly

# \$675,000 - 24 Harley Way, Spruce Grove

MLS® #E4412236

**\$675,000**

4 Bedroom, 2.50 Bathroom, 2,283 sqft

Single Family on 0.00 Acres

Hilldowns, Spruce Grove, AB

Welcome to this stunning brand-new two-story home, nestled on a serene cul-de-sac in a welcoming, family-friendly community.

Designed with both comfort and style in mind, this home boasts a bright and open main floor featuring a modern chef's kitchen, spacious dining area, and a sunlit living room perfect for gatherings. An additional den/office space and a convenient 2-piece bathroom complete this versatile main level. Upstairs, you'll find

three generously sized bedrooms, plus a luxurious primary suite with a spa-like 5-piece ensuite, as well as a 4-piece bathroom and a large, open-concept bonus room that creates an airy, connected feel. For added

convenience, this home also includes a triple attached garage, providing plenty of space for vehicles and storage. Ideal for families or

those looking for a peaceful community with modern comforts, this home won't last

long! \*Photos are the artist rendering for representation only\*

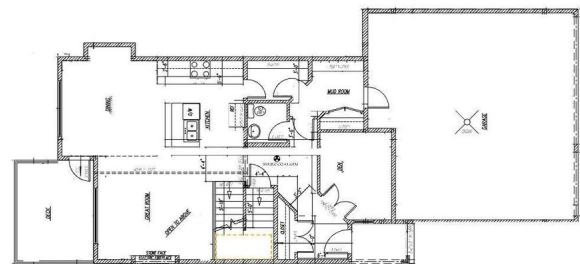
Built in 2024

## Essential Information

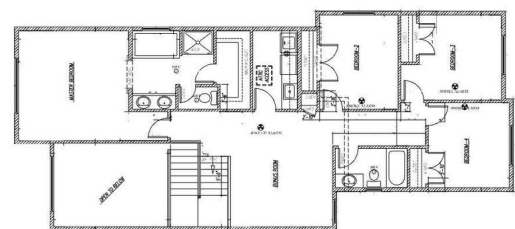
|           |           |
|-----------|-----------|
| MLS® #    | E4412236  |
| Price     | \$675,000 |
| Bedrooms  | 4         |
| Bathrooms | 2.50      |



FRONT ELEVATION



MAIN FLOOR PLAN 1002 SQ FT  
GARAGE 690 SQ.FT.



UPPER FLOOR PLAN 1281 SQ.FT.

|                |                        |
|----------------|------------------------|
| Full Baths     | 2                      |
| Half Baths     | 1                      |
| Square Footage | 2,283                  |
| Acres          | 0.00                   |
| Year Built     | 2024                   |
| Type           | Single Family          |
| Sub-Type       | Detached Single Family |
| Style          | 2 Storey               |
| Status         | Active                 |

### **Community Information**

|             |               |
|-------------|---------------|
| Address     | 24 Harley Way |
| Area        | Spruce Grove  |
| Subdivision | Hilldowns     |
| City        | Spruce Grove  |
| County      | ALBERTA       |
| Province    | AB            |
| Postal Code | T7X 0X4       |

### **Amenities**

|           |  |
|-----------|--|
| Amenities | Detectors Smoke, No Animal Home, No Smoking Home |
| Parking   | Triple Garage Attached                           |

### **Interior**

|                   |                           |
|-------------------|---------------------------|
| Interior Features | ensuite bathroom          |
| Appliances        | See Remarks               |
| Heating           | Forced Air-1, Natural Gas |
| Stories           | 2                         |
| Has Basement      | Yes                       |
| Basement          | Full, Unfinished          |

### **Exterior**

|                   |   |
|-------------------|---|
| Exterior          | Wood, Stone, Vinyl                                      |
| Exterior Features | Cul-De-Sac, Playground Nearby, Schools, Shopping Nearby |
| Roof              | Asphalt Shingles  |
| Construction      | Wood, Stone, Vinyl                                      |
| Foundation        | Concrete Perimeter                                      |

### **Additional Information**

Date Listed            October 31st, 2024

Days on Market      159

Zoning                Zone 91

DATA IS DEEMED RELIABLE BUT IS NOT GUARANTEED ACCURATE BY THE REALTORS® ASSOCIATION OF EDMONTON. COPYRIGHT 2025 BY THE REALTORS® ASSOCIATION OF EDMONTON. ALL RIGHTS RESERVED. Trademarks are owned or controlled by the Canadian Real Estate Association (CREA) and identify real estate professionals who are members of CREA (REALTOR®, REALTORS®) and/or the quality of services they provide (MLS®, Multiple Listing Service®)

Listing information last updated on April 8th, 2025 at 1:47am MDT