

Courtesy Of Jeff D Jackson Of Bode

# \$749,900 - 294 Canter Wynd, Sherwood Park

MLS® #E4413413

**\$749,900**

3 Bedroom, 2.50 Bathroom, 2,275 sqft

Single Family on 0.00 Acres

Cambrian, Sherwood Park, AB

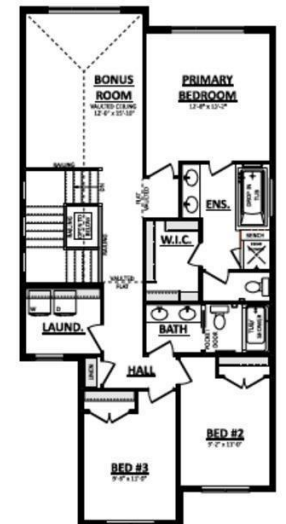
The Olivia in Cambrian model offers 2,203 sq ft of thoughtfully designed living space, featuring a sought-after walk-out basement that seamlessly extends indoor living to the outdoors. Enjoy a contemporary kitchen with a spacious island, dual sinks, and an open floor concept. The luxurious ensuite boasts dual sinks, a walk-in closet, and spa-like finishes, including a relaxing drop-in tub. The second floor offers a vaulted-ceiling bonus room, ideal for entertainment, while the cozy fireplace adds warmth to the main living area. Elegant quartz countertops are featured throughout, along with an open-to-below stairwell for a bright, airy feel. With the convenience of upstairs laundry and a side entrance, this home perfectly balances comfort, style, and functionality. Photos are representative.



Built in 2024

## Essential Information

|                |           |
|----------------|-----------|
| MLS® #         | E4413413  |
| Price          | \$749,900 |
| Bedrooms       | 3         |
| Bathrooms      | 2.50      |
| Full Baths     | 2         |
| Half Baths     | 1         |
| Square Footage | 2,275     |
| Acres          | 0.00      |



SECOND FLOOR PLAN  
(OPT. REAR BONUS ROOM)  
1131 Sq.Ft.

|            |                        |
|------------|------------------------|
| Year Built | 2024                   |
| Type       | Single Family          |
| Sub-Type   | Detached Single Family |
| Style      | 2 Storey               |
| Status     | Active                 |

### **Community Information**

|             |                 |
|-------------|-----------------|
| Address     | 294 Canter Wynd |
| Area        | Sherwood Park   |
| Subdivision | Cambrian        |
| City        | Sherwood Park   |
| County      | ALBERTA         |
| Province    | AB              |
| Postal Code | T8A 4V2         |

### **Amenities**

|                |  |
|----------------|--|
| Amenities      | No Animal Home, No Smoking Home, Walkout Basement, See Remarks |
| Parking Spaces | 4  |
| Parking        | Double Garage Attached   |

### **Interior**

|                   |                           |
|-------------------|---------------------------|
| Interior Features | ensuite bathroom          |
| Appliances        | None                      |
| Heating           | Forced Air-1, Natural Gas |
| Fireplace         | Yes                       |
| Fireplaces        | Insert                    |
| Stories           | 2                         |
| Has Basement      | Yes                       |
| Basement          | Full, Unfinished          |

### **Exterior**

|                   |  |
|-------------------|--|
| Exterior          | Wood, Stone, Vinyl                               |
| Exterior Features | Park/Reserve, Playground Nearby, Shopping Nearby |
| Roof              | Asphalt Shingles                                 |
| Construction      | Wood, Stone, Vinyl                               |
| Foundation        | Concrete Perimeter                               |

### **Additional Information**

|             |                     |
|-------------|---------------------|
| Date Listed | November 12th, 2024 |
|-------------|---------------------|

Days on Market 147  
Zoning Zone 25



DATA IS DEEMED RELIABLE BUT IS NOT GUARANTEED ACCURATE BY THE REALTORS® ASSOCIATION OF EDMONTON. COPYRIGHT 2025 BY THE REALTORS® ASSOCIATION OF EDMONTON. ALL RIGHTS RESERVED. Trademarks are owned or controlled by the Canadian Real Estate Association (CREA) and identify real estate professionals who are members of CREA (REALTOR®, REALTORS®) and/or the quality of services they provide (MLS®, Multiple Listing Service®)

Listing information last updated on April 8th, 2025 at 2:02am MDT