

\$187,500 - 801 10106 105 Street, Edmonton

MLS® #E4426350

\$187,500

2 Bedroom, 2.00 Bathroom, 1,540 sqft
Condo / Townhouse on 0.00 Acres

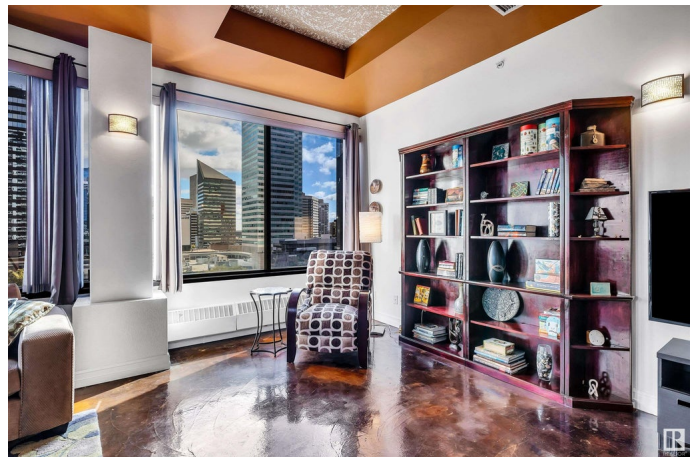
Downtown (Edmonton), Edmonton, AB

OPEN CONCEPT LOFT! 2 BEDROOMS + 2 BATHS. This 1,539 sq ft, 8th floor unit features an open layout with polished concrete & ceramic tile flooring, soaring 10 ft ceilings, and breathtaking panoramic views of downtown Edmonton. The spacious living room flows into an impressive kitchen, complete with a center island that seats two, an abundance of cabinets and ample counter space, all adjacent to the dining area - perfect for entertaining or intimate dinners. The primary bedroom includes a 4-pce ensuite bath & walk-in closet. The 2nd bedroom with a Murphy Bed can double as an office if required. The unit is finished with a second 3-pce bathroom and in-suite laundry for added convenience. 1 stall in parkade. Located across from a park currently being expanded and revitalized by the City, providing a beautiful outdoor space for relaxation. Enjoy great access to public transportation, allowing you to easily navigate the city, as well as proximity to excellent post-secondary schools & much more! **ONLY \$187,500.00**

Built in 1973

Essential Information

MLS® #	E4426350
Price	\$187,500



Bedrooms	2
Bathrooms	2.00
Full Baths	2
Square Footage	1,540
Acres	0.00
Year Built	1973
Type	Condo / Townhouse
Sub-Type	Apartment High Rise
Style	Loft
Status	Active

Community Information

Address	801 10106 105 Street
Area	Edmonton
Subdivision	Downtown (Edmonton)
City	Edmonton
County	ALBERTA
Province	AB
Postal Code	T5J 5E7

Amenities

Amenities	Ceiling 10 ft., No Animal Home, No Smoking Home, Sprinkler System-Fire, Storage-In-Suite, Wall Unit-Built-In
Parking Spaces	1
Parking	Parkade

Interior

Interior Features	ensuite bathroom
Appliances	Dryer, Microwave Hood Fan, Refrigerator, Stove-Electric, Washer
Heating	Baseboard, Natural Gas
# of Stories	11
Stories	1
Has Basement	Yes
Basement	None, No Basement

Exterior

Exterior	Concrete
Exterior Features	Golf Nearby, Park/Reserve, Public Transportation, Schools, Shopping Nearby, View City, View Downtown

Roof	SBS Roofing System
Construction	Concrete
Foundation	Concrete Perimeter

Additional Information

Date Listed	March 19th, 2025
Days on Market	17
Zoning	Zone 12
Condo Fee	\$983

DATA IS DEEMED RELIABLE BUT IS NOT GUARANTEED ACCURATE BY THE REALTORS® ASSOCIATION OF EDMONTON. COPYRIGHT 2025 BY THE REALTORS® ASSOCIATION OF EDMONTON. ALL RIGHTS RESERVED. Trademarks are owned or controlled by the Canadian Real Estate Association (CREA) and identify real estate professionals who are members of CREA (REALTOR®, REALTORS®) and/or the quality of services they provide (MLS®, Multiple Listing Service®)

Listing information last updated on April 5th, 2025 at 11:17am MDT