

Courtesy Of Nathan Lorenz Of Real Broker

\$109,900 - 702 10106 105 Street, Edmonton

MLS® #E4427408

\$109,900

1 Bedroom, 1.00 Bathroom, 995 sqft
Condo / Townhouse on 0.00 Acres

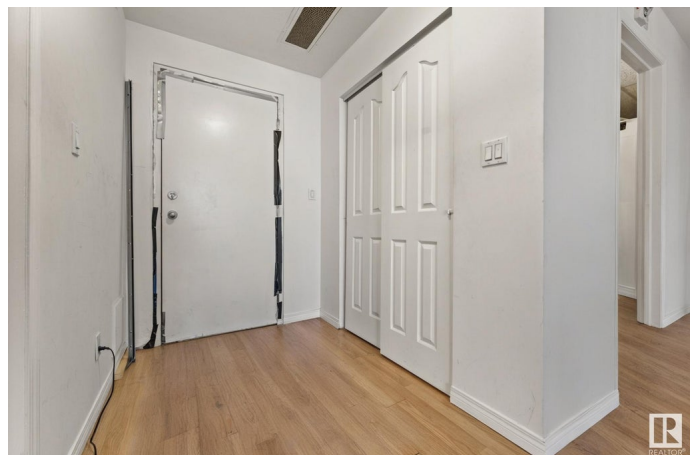
Downtown (Edmonton), Edmonton, AB

Welcome to this open-concept 7th floor 995 SF LOFT-STYLE condo right on JASPER AVE! Stepping into this unit you will notice the 10ft high ceilings and the open windows with DOWNTOWN VIEWS! This unit has a full kitchen with an island with lots of cupboard and counter top space. Your unit has a generous sized living room with east facing picture windows that brings in lots of natural light and of views of the downtown skyline. Your good sized bedroom is adjacent with large windows and a WALK-IN CLOSET. Beside the entrance is the full 4pc bathroom in the unit with a tub & shower. Lastly is the ENSUITE LAUNDRY with stackable washer/dryer and a storage room. Downstairs you have 1 TITLED HEATED PARKING STALL that comes with the unit for convenience. Location is everything here with mins from ROGERS PLACE, MACEWAN, THE RIVER VALLEY, DOWNTOWN RESTAURANTS, AND PUBLIC TRANSIT & 1 BLOCK AWAY FROM FUTURE LRT STOP.

Built in 1973

Essential Information

| | |
|----------|-----------|
| MLS® # | E4427408 |
| Price | \$109,900 |
| Bedrooms | 1 |



| | |
|----------------|------------------------|
| Bathrooms | 1.00 |
| Full Baths | 1 |
| Square Footage | 995 |
| Acres | 0.00 |
| Year Built | 1973 |
| Type | Condo / Townhouse |
| Sub-Type | Apartment High Rise |
| Style | Single Level Apartment |
| Status | Active |

Community Information

| | |
|-------------|----------------------|
| Address | 702 10106 105 Street |
| Area | Edmonton |
| Subdivision | Downtown (Edmonton) |
| City | Edmonton |
| County | ALBERTA |
| Province | AB |
| Postal Code | T5J 5E7 |

Amenities

| | |
|----------------|-----------------------------------|
| Amenities | Off Street Parking, Security Door |
| Parking Spaces | 1 |
| Parking | Heated, Parkade, Underground |

Interior

| | |
|--------------|--|
| Appliances | Dishwasher-Built-In, Dryer, Refrigerator, Stove-Electric, Washer |
| Heating | Baseboard, Hot Water, Water |
| # of Stories | 11 |
| Stories | 1 |
| Has Basement | Yes |
| Basement | None, No Basement |

Exterior

| | |
|-------------------|---|
| Exterior | Concrete |
| Exterior Features | Corner Lot, Flat Site, Schools, Shopping Nearby, View City, View Downtown |
| Roof | SBS Roofing System |
| Construction | Concrete |
| Foundation | Concrete Perimeter |

School Information

| | |
|------------|------------------|
| Elementary | Garneau School |
| Middle | McKernan School |
| High | Allendale School |

Additional Information

| | |
|----------------|------------------|
| Date Listed | March 25th, 2025 |
| Days on Market | 11 |
| Zoning | Zone 12 |
| Condo Fee | \$737 |

DATA IS DEEMED RELIABLE BUT IS NOT GUARANTEED ACCURATE BY THE REALTORS® ASSOCIATION OF EDMONTON. COPYRIGHT 2025 BY THE REALTORS® ASSOCIATION OF EDMONTON. ALL RIGHTS RESERVED. Trademarks are owned or controlled by the Canadian Real Estate Association (CREA) and identify real estate professionals who are members of CREA (REALTOR®, REALTORS®) and/or the quality of services they provide (MLS®, Multiple Listing Service®)

Listing information last updated on April 5th, 2025 at 11:17am MDT