

\$479,000 - 56 Deerbourne Drive, St. Albert

MLS® #E4429020

\$479,000

4 Bedroom, 2.50 Bathroom, 1,149 sqft

Single Family on 0.00 Acres

Deer Ridge (St. Albert), St. Albert, AB

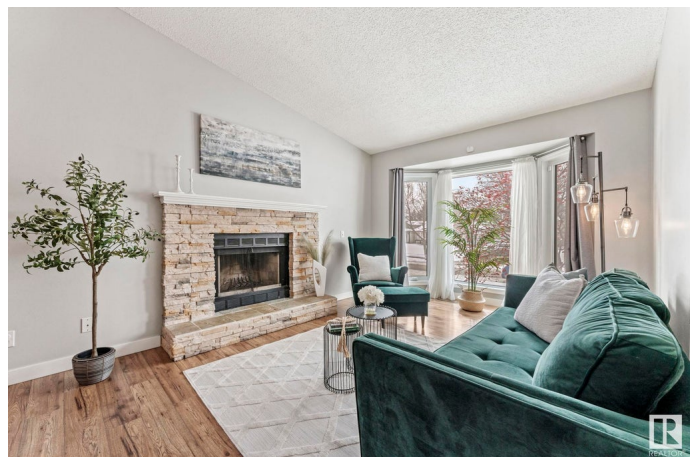
Welcome to this upgraded bi-level, perfectly nestled in the heart of Deer Ridge - a neighbourhood known for its family-friendly charm. Step inside to find neutral decor & a cozy living room featuring a wood-burning fireplace. Adjacent is the dining room with a gorgeous brick feature wall. The bright eat-in kitchen boasts stainless steel appliances, new dishwasher, ample workspace, & patio doors leading to the backyard. The primary bedroom offers double closets & a 2 pce ensuite. Two additional bedrooms & a 4 pce bath complete the main level. Downstairs, the f/f basement is flooded with natural light & features 2 large living areas, bedroom, office/addt'l bdrm & a 3 pce bath. The laundry & storage area complete this level. Outside, enjoy the landscaped yard, deck & double attached garage. The furnace, A/C & humidifier were replaced in 2024 & the HWT is brand new! Located just steps away from a playground & huge green space, this home is close to schools, parks, shopping, restaurants, & countless amenities.

Built in 1990

Essential Information

MLS® # E4429020

Price \$479,000



Bedrooms	4
Bathrooms	2.50
Full Baths	2
Half Baths	1
Square Footage	1,149
Acres	0.00
Year Built	1990
Type	Single Family
Sub-Type	Detached Single Family
Style	Bi-Level
Status	Active

Community Information

Address	56 Deerbourne Drive
Area	St. Albert
Subdivision	Deer Ridge (St. Albert)
City	St. Albert
County	ALBERTA
Province	AB
Postal Code	T8N 4R2

Amenities

Amenities	Air Conditioner, Deck
Parking	Double Garage Attached

Interior

Interior Features	ensuite bathroom
Appliances	Air Conditioning-Central, Dishwasher-Built-In, Dryer, Garage Opener, Microwave Hood Fan, Refrigerator, Stove-Electric, Washer, Window Coverings
Heating	Forced Air-1, Natural Gas
Fireplace	Yes
Fireplaces	Brick Facing
Stories	2
Has Basement	Yes
Basement	Full, Finished

Exterior

Exterior	Wood, Brick, Vinyl
----------	--------------------

Exterior Features	Fenced, Golf Nearby, Landscaped, Playground Nearby, Public Transportation, Schools, Shopping Nearby
Roof	Asphalt Shingles
Construction	Wood, Brick, Vinyl
Foundation	Concrete Perimeter

Additional Information

Date Listed	April 4th, 2025
Days on Market	11
Zoning	Zone 24

DATA IS DEEMED RELIABLE BUT IS NOT GUARANTEED ACCURATE BY THE REALTORS® ASSOCIATION OF EDMONTON. COPYRIGHT 2025 BY THE REALTORS® ASSOCIATION OF EDMONTON. ALL RIGHTS RESERVED.Trademarks are owned or controlled by the Canadian Real Estate Association (CREA) and identify real estate professionals who are members of CREA (REALTOR®, REALTORS®) and/or the quality of services they provide (MLS®, Multiple Listing Service®)

Listing information last updated on April 15th, 2025 at 12:02am MDT