

Courtesy Of Shane A Matwie Of Century 21 Masters

## \$549,900 - 130 Lilac Lane, Sherwood Park

MLS® #E4429354

**\$549,900**

3 Bedroom, 3.00 Bathroom, 1,859 sqft  
Single Family on 0.00 Acres

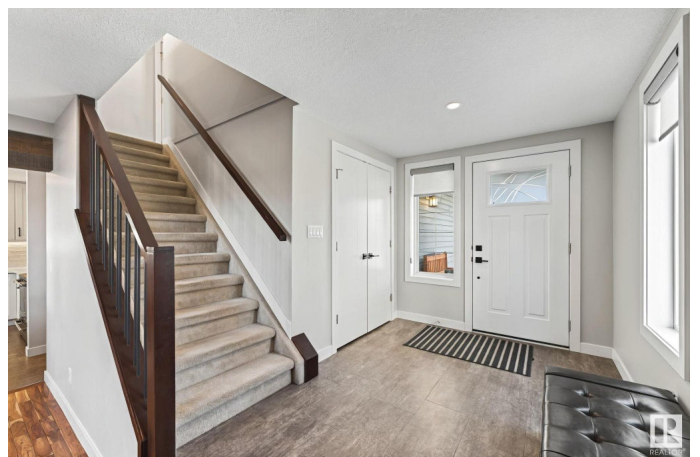
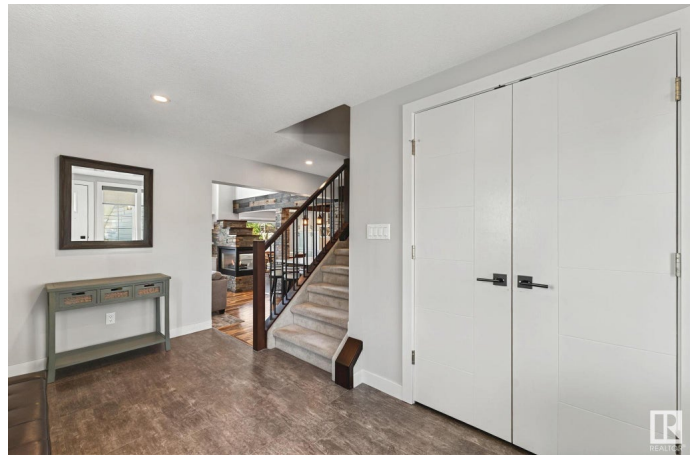
Clarkdale Meadows, Sherwood Park, AB

Welcome home to this stunning 1860 sq ft residence! This beautiful house features 3 spacious bedrooms, 2 full baths, and 2 convenient half baths. The heart of the home boasts a modern kitchen with extensive renovations accented by quartz countertops, tons of cabinets, new appliances and under-cabinet lighting. Enjoy the warmth of a 3-sided fireplace that connects the kitchen and dining area. Beautiful Acacia hardwood runs through the living room which is accentuated by high ceilings open to the second story. The upper level includes the 3 bedrooms and a versatile flex space ideal for an office or den. A fully finished basement adds to the appeal with a cozy corner bar, a large family room, and ample storage. Additional highlights include upgraded lighting, a newer high-efficiency furnace, oversized hot water tank and air conditioning. Nestled on a quiet street, this home features a sizable backyard deck and sought after RV parking

Built in 1993

### Essential Information

MLS® #	E4429354
Price	\$549,900
Bedrooms	3
Bathrooms	3.00



Full Baths	2
Half Baths	2
Square Footage	1,859
Acres	0.00
Year Built	1993
Type	Single Family
Sub-Type	Detached Single Family
Style	2 Storey
Status	Active

### **Community Information**

Address	130 Lilac Lane
Area	Sherwood Park
Subdivision	Clarkdale Meadows
City	Sherwood Park
County	ALBERTA
Province	AB
Postal Code	T8H 1W1

### **Amenities**

Amenities	On Street Parking, Air Conditioner, Deck, Hot Water Natural Gas, No Smoking Home, Vinyl Windows
Parking Spaces	4
Parking	Double Garage Attached

### **Interior**

Interior Features	ensuite bathroom
Appliances	Dishwasher-Built-In, Dryer, Oven-Microwave, Storage Shed, Stove-Electric, Vacuum System Attachments, Vacuum Systems, Washer, Window Coverings, Wine/Beverage Cooler, Refrigerators-Two, TV Wall Mount
Heating	Forced Air-1, Natural Gas
Fireplace	Yes
Fireplaces	Double Sided
Stories	3
Has Basement	Yes
Basement	Full, Finished

### **Exterior**

Exterior	Wood, Vinyl
Exterior Features	Fenced, Landscaped, No Back Lane, Schools, Shopping Nearby
Roof	Asphalt Shingles
Construction	Wood, Vinyl
Foundation	Concrete Perimeter

### **School Information**

Elementary	Davidson Creek Holy Spirit
Middle	Lakeland Ridge, St. Teresa
High	Sal, ABJ

### **Additional Information**

Date Listed	April 5th, 2025
Days on Market	2
Zoning	Zone 25

DATA IS DEEMED RELIABLE BUT IS NOT GUARANTEED ACCURATE BY THE REALTORS® ASSOCIATION OF EDMONTON. COPYRIGHT 2025 BY THE REALTORS® ASSOCIATION OF EDMONTON. ALL RIGHTS RESERVED. Trademarks are owned or controlled by the Canadian Real Estate Association (CREA) and identify real estate professionals who are members of CREA (REALTOR®, REALTORS®) and/or the quality of services they provide (MLS®, Multiple Listing Service®)

Listing information last updated on April 7th, 2025 at 4:47pm MDT