

\$554,900 - 58 5 Rondeau Drive, St. Albert

MLS® #E4429909

\$554,900

2 Bedroom, 2.50 Bathroom, 1,521 sqft

Condo / Townhouse on 0.00 Acres

South Riel, St. Albert, AB

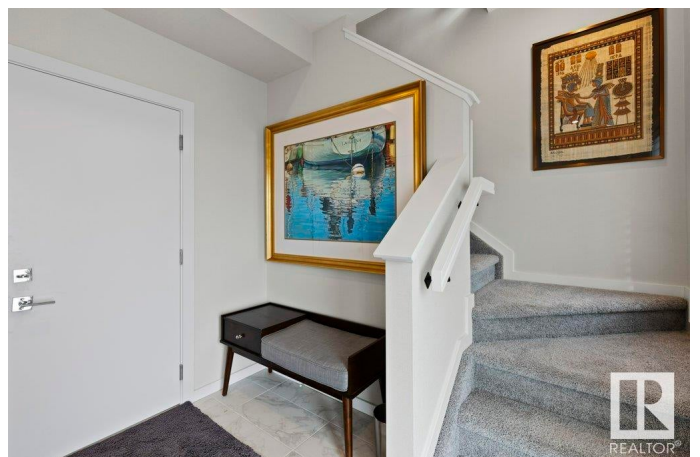
Welcome to Midtown by Averton, a premier community in St. Albert that redefines luxury living. This stunning 3-storey home features over \$175,000 in UPGRADES, ROOFTOP PATIO & the best views in the complex, making it truly BETTER THAN NEW. The thoughtfully designed layout features 2 spacious bedrooms, each w/luxurious ensuite & custom closets, a chef-inspired kitchen & elegant dining area. Premium upgrades throughout including a custom kitchen w/extra cabinetry, floating shelves, Professional Series KitchenAid appliance package, bar fridge & gas stove. Additional highlights: luxury vinyl plank flooring, whole-house soft water system, A/C, charcoal/UV light air filtration, living room TV niche w/ 75" linear f/p, Kohler fixtures & Hunter Douglas Silhouette blinds throughout. The dbl attached garage is fully finished with a POLYASPARTIC FLOOR, EV CHARGER & cabinetry. Enjoy a low-maintenance lifestyle. No more shoveling, grass cutting or exterior upkeep. For those that understand & appreciate highest quality

Built in 2022

Essential Information

MLS® # E4429909

Price \$554,900



Bedrooms	2
Bathrooms	2.50
Full Baths	2
Half Baths	1
Square Footage	1,521
Acres	0.00
Year Built	2022
Type	Condo / Townhouse
Sub-Type	Townhouse
Style	3 Storey
Status	Active

Community Information

Address	58 5 Rondeau Drive
Area	St. Albert
Subdivision	South Riel
City	St. Albert
County	ALBERTA
Province	AB
Postal Code	T8N 7X8

Amenities

Amenities	Air Conditioner, Patio, See Remarks
Parking	Double Garage Attached

Interior

Interior Features	ensuite bathroom
Appliances	Air Conditioning-Central, Dishwasher-Built-In, Dryer, Garage Control, Garage Opener, Garburator, Hood Fan, Oven-Microwave, Refrigerator, Stove-Gas, Washer, Water Softener, Window Coverings, Wine/Beverage Cooler
Heating	Forced Air-1, Natural Gas
Stories	3
Has Basement	Yes
Basement	None, No Basement

Exterior

Exterior	Wood, Brick, Metal, Vinyl
Exterior Features	Golf Nearby, Playground Nearby, Public Transportation, Schools,

	Shopping Nearby, See Remarks
Roof	Roll Roofing
Construction	Wood, Brick, Metal, Vinyl
Foundation	Slab

Additional Information

Date Listed	April 9th, 2025
Days on Market	10
Zoning	Zone 24
Condo Fee	\$133

DATA IS DEEMED RELIABLE BUT IS NOT GUARANTEED ACCURATE BY THE REALTORS® ASSOCIATION OF EDMONTON. COPYRIGHT 2025 BY THE REALTORS® ASSOCIATION OF EDMONTON. ALL RIGHTS RESERVED. Trademarks are owned or controlled by the Canadian Real Estate Association (CREA) and identify real estate professionals who are members of CREA (REALTOR®, REALTORS®) and/or the quality of services they provide (MLS®, Multiple Listing Service®)

Listing information last updated on April 19th, 2025 at 4:02am MDT