

## \$350,000 - 11016 166 Avenue, Edmonton

MLS® #E4431146

**\$350,000**

5 Bedroom, 2.50 Bathroom, 1,205 sqft  
Single Family on 0.00 Acres

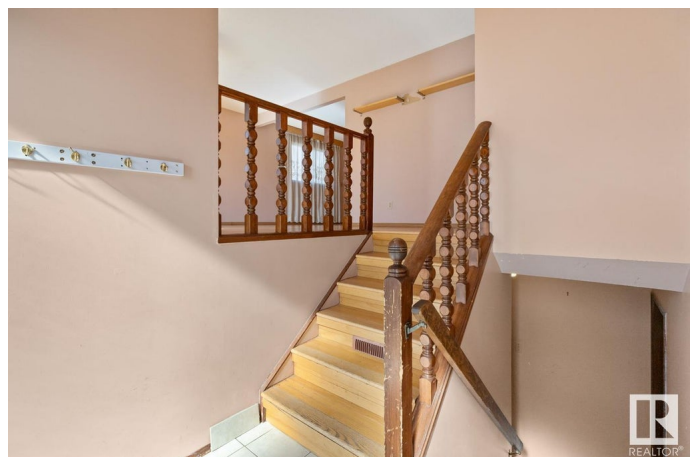
Lorelei, Edmonton, AB

Tons of potential in this Lorelei bi-level, featuring 5 bedrooms, 2.5 baths, **SECOND KITCHEN** & oversized **DOUBLE** garage. Hardwood floors throughout the family sized living room & dining area. The eat in kitchen offers plenty of cabinets. King sized primary with 2pc ensuite. 2 more generous sized bedrooms & 4pc bath complement the functional layout. The basement offers a good sized living room, second kitchen, 2 bedrooms, 4pc bath & tons of storage space. Fenced & landscaped yard with patio and access to the double garage. Awesome location, steps away from parks, trails, shopping & all amenities

Built in 1976

### Essential Information

|                |                        |
|----------------|------------------------|
| MLS® #         | E4431146               |
| Price          | \$350,000              |
| Bedrooms       | 5                      |
| Bathrooms      | 2.50                   |
| Full Baths     | 2                      |
| Half Baths     | 1                      |
| Square Footage | 1,205                  |
| Acres          | 0.00                   |
| Year Built     | 1976                   |
| Type           | Single Family          |
| Sub-Type       | Detached Single Family |



|        |          |
|--------|----------|
| Style  | Bi-Level |
| Status | Active   |

### Community Information

|             |                  |
|-------------|------------------|
| Address     | 11016 166 Avenue |
| Area        | Edmonton         |
| Subdivision | Lorelei          |
| City        | Edmonton         |
| County      | ALBERTA          |
| Province    | AB               |
| Postal Code | T5X 1Y3          |

### Amenities

|           |                                    |
|-----------|------------------------------------|
| Amenities | Patio, See Remarks                 |
| Parking   | Double Garage Detached, Over Sized |

### Interior

|                   |   |
|-------------------|---|
| Interior Features | ensuite bathroom                            |
| Appliances        | Dryer, Refrigerator, Stove-Electric, Washer |
| Heating           | Forced Air-1, Natural Gas                   |
| Stories           | 2   |
| Has Basement      | Yes   |
| Basement          | Full, Partially Finished                    |

### Exterior

|                   |   |
|-------------------|---|
| Exterior          | Wood, Vinyl   |
| Exterior Features | Cul-De-Sac, Fenced, Landscaped, Playground Nearby, Public Transportation, Schools, Shopping Nearby, See Remarks |
| Roof              | Asphalt Shingles  |
| Construction      | Wood, Vinyl   |
| Foundation        | Concrete Perimeter  |

### Additional Information

|                |                  |
|----------------|------------------|
| Date Listed    | April 16th, 2025 |
| Days on Market | 3                |
| Zoning         | Zone 27          |

DATA IS DEEMED RELIABLE BUT IS NOT GUARANTEED ACCURATE BY THE REALTORS® ASSOCIATION OF EDMONTON. COPYRIGHT 2025 BY THE REALTORS® ASSOCIATION OF EDMONTON. ALL RIGHTS RESERVED. Trademarks are owned or controlled by the Canadian Real Estate Association (CREA) and identify real estate professionals who are members of CREA (REALTOR®, REALTORS®) and/or the quality of services they

provide (MLS®®, Multiple Listing Service®®)  
Listing information last updated on April 19th, 2025 at 10:17am MDT