

Courtesy Of Christina A Reid Of Century 21 Leading

\$818,000 - 24 7121 May Crescent, Edmonton

MLS® #E4432549

\$818,000

3 Bedroom, 2.50 Bathroom, 2,580 sqft

Condo / Townhouse on 0.00 Acres

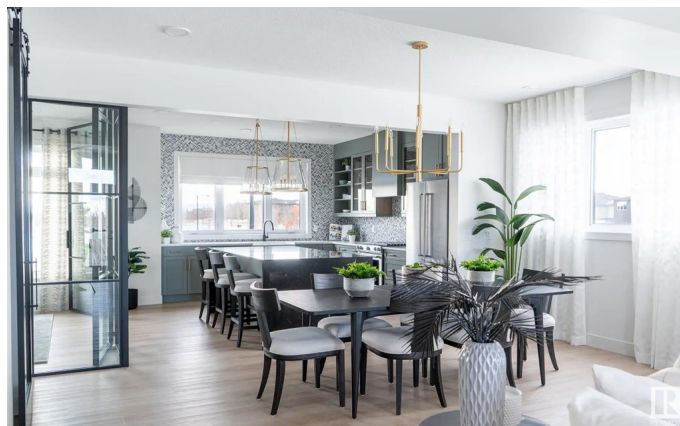
Magrath Heights, Edmonton, AB

Live in luxury in one of Edmonton's most desirable communities. The Emerald is located in Ekos Point, a community that rests at the edge of Larch Sanctuary and the Whitemud Creek. In these townhomes, you wake up with a gorgeous sanctuary right in your backyard, surrounded by greenery and plenty of walking trails. Experience peace and life in Larch. These aren't just any townhomes – The Emerald is spacious with 2580 sq ft and filled with modern touches, open large windows and elegant design. Every space of this house is brilliantly designed, from the flex room to the den. These homes boast a private patio and balcony, so you can take in all your surroundings. Start living in Ekos Point. Photos and tour are of the showhome**You still have time to personalize your interior selections in this home under construction**

Built in 2023

Essential Information

MLS® #	E4432549
Price	\$818,000
Bedrooms	3
Bathrooms	2.50
Full Baths	2
Half Baths	1
Square Footage	2,580



Acres	0.00
Year Built	2023
Type	Condo / Townhouse
Sub-Type	Townhouse
Style	3 Storey
Status	Active

Community Information

Address	24 7121 May Crescent
Area	Edmonton
Subdivision	Magrath Heights
City	Edmonton
County	ALBERTA
Province	AB
Postal Code	T6R 0X2

Amenities

Amenities	Carbon Monoxide Detectors, Ceiling 9 ft., Deck, Detectors Smoke, Hot Water Tankless, Parking-Visitor, Smart/Program. Thermostat, HRV System
Parking	Double Garage Attached

Interior

Interior Features	ensuite bathroom
Appliances	Dishwasher-Built-In, Garage Control, Garage Opener, Refrigerator, Stacked Washer/Dryer, Stove-Electric
Heating	Forced Air-1, Natural Gas
Fireplace	Yes
Fireplaces	Insert
Stories	3
Has Basement	Yes
Basement	None, Partially Finished

Exterior

Exterior	Prefab, Vinyl
Exterior Features	Airport Nearby, Backs Onto Park/Trees, Fenced, Golf Nearby, Landscaped, Playground Nearby, Public Swimming Pool, Public Transportation, Schools, Shopping Nearby
Roof	Asphalt Shingles
Construction	Prefab, Vinyl

Foundation Slab

School Information

Elementary NELLIE CARLSON K-9
Middle Archbishop Joseph MacNeil
High LILLIAN OSBORNE

Additional Information

Date Listed April 24th, 2025
Days on Market 5
Zoning Zone 14
HOA Fees 250
HOA Fees Freq. Annually
Condo Fee \$162

DATA IS DEEMED RELIABLE BUT IS NOT GUARANTEED ACCURATE BY THE REALTORS® ASSOCIATION OF EDMONTON. COPYRIGHT 2025 BY THE REALTORS® ASSOCIATION OF EDMONTON. ALL RIGHTS RESERVED.Trademarks are owned or controlled by the Canadian Real Estate Association (CREA) and identify real estate professionals who are members of CREA (REALTOR®, REALTORS®) and/or the quality of services they provide (MLS®, Multiple Listing Service®)
Listing information last updated on April 29th, 2025 at 2:02pm MDT